

## Dispositivo di centraggio DCP40

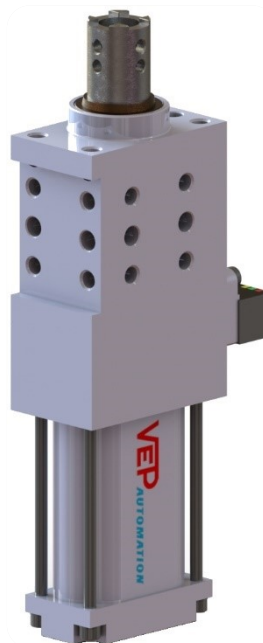
### Locator device DCP40

#### Caratteristiche principali:

- Design compatto
- Alta precisione di posizionamento
- Corpo in alluminio
- 4 possibilità di staffaggio (superiore, fronte e laterali)
- 5 tipologie di steli nitruati
- Boccole guida in bronzo
- Corsa stelo: 20, 40, 60 mm
- Alesaggio del cilindro pneumatico: 40 mm
- 2 fori di connessione G1/8"
- Finecorsa induttivo P+F (connessione M12x1)
- Comando manuale

#### Main characteristics:

- Compact design
- High accuracy of positioning
- Aluminum body
- 4 mounting areas (up, front and sides);
- 5 types nitrided rods
- Bronze guiding bushes
- Rod stroke: 20, 40, 60 mm
- Pneumatic cylinder bore: 40 mm
- 2 feeding ports G1/8"
- Inductive proximity switch P+F (connection M12x1)
- Hand lever


[PDF](#)

[3D Step](#)

[Index](#)

#### Indice. Index.

Pagina Page	Descrizione Description	
1	Caratteristiche principali <a href="#">Main characteristics</a>	
2	Codice d'ordine <a href="#">Ordering example</a>	
3	Pagina dimensionale <a href="#">Dimensional page</a>	
4		DCP40...
5		DCP40...M...
6 - 7	DCM40K...	
6 - 7	Tipologia steli / <a href="#">Rods type</a>	
7	Schema finecorsa induttivo <a href="#">Diagram for inductive proximity switch</a>	
8	Schema pneumatico / <a href="#">Pneumatic plan</a> Diagrammi / <a href="#">Diagrams</a> Proprietà / <a href="#">Properties</a>	
8	Ricambi / <a href="#">Spare parts</a>	
9	Note / <a href="#">Notes</a>	

## Codice d'ordine. Ordering example.

**DCP40 - BN - 40 - I - 03 - LA**

**Modello e alesaggio cilindro:**  
**Type and cylinder bore:**

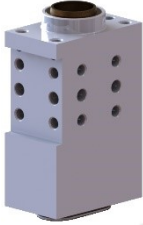
**DCP40**  
centratore con cilindro pneumatico alesaggio 40 mm  
locator with pneumatic cylinder bore 40 mm

**DCP40K**  
centratore con cilindro pneumatico alesaggio 40 mm rinforzato per coppie assiali  
locator with pneumatic cylinder bore 40 mm reinforced for axial torque

**DCP40M**  
centratore con cilindro pneumatico alesaggio 40 mm e comando manuale  
locator with pneumatic cylinder bore 40 mm and hand lever

**DCP40KM**  
centratore con cilindro pneumatico alesaggio 40 mm rinforzato per coppie assiali e comando manuale  
locator with pneumatic cylinder bore 40 mm reinforced for axial torque and hand lever


**DCM40K**  
centratore manuale irreversibile (senza cilindro pneumatico)  
Irreversible manual locator (without pneumatic cylinder)



**Finecorsa:**  
**Proximity switch:**

X: senza finecorsa  
without proximity switch

I: finecorsa induttivo P+F  
inductive proximity switch P+F



**Corsa:**  
**Stroke:**

<b>DCM40K</b>	---	40	60
<b>DCP40</b>	20	40	60
<b>DCP40K</b>	20	40	60
<b>DCP40M</b>	20	40	60
<b>DCP40KM</b>	20	40	60

**Tipologia stelo (vedere pag. 06-07):**  
**Rod type (see pag. 06-07):**


**AN:** stelo nitruato con foro Ø10H7 e chiavetta a croce  
nitrided rod with Ø10H7 hole and cross-profiled end

**BN:** stelo nitruato con foro Ø16H7 e chiavetta a croce  
nitrided rod with Ø16H7 hole and cross-profiled end

**CN:** stelo nitruato con foro Ø16H7 e terminale piatto  
nitrided rod with Ø16H7 hole and flat end

**DN:** stelo nitruato con foro Ø10H7 e terminale piatto  
nitrided rod with Ø10H7 hole and flat end

**SPN:** stelo nitruato piatto  
nitrided plate rod



**Posizione stelo SP (vedere pag. 06):**  
**SP rod position (see page 06):**

<b>03</b>	<b>06</b>	<b>09</b>	<b>12</b>
-----------	-----------	-----------	-----------

**N.B.:** da specificare solo per centratori con stelo **SPN**  
**NOTE:** specify only for locators with **SPN** rod

**Posizione comando manuale:**  
(specificare solo per DCM40K, DCP40M e DCP40KM)  
**Hand lever position:**  
(specify only for DCM40K, DCP40M and DCP40KM)

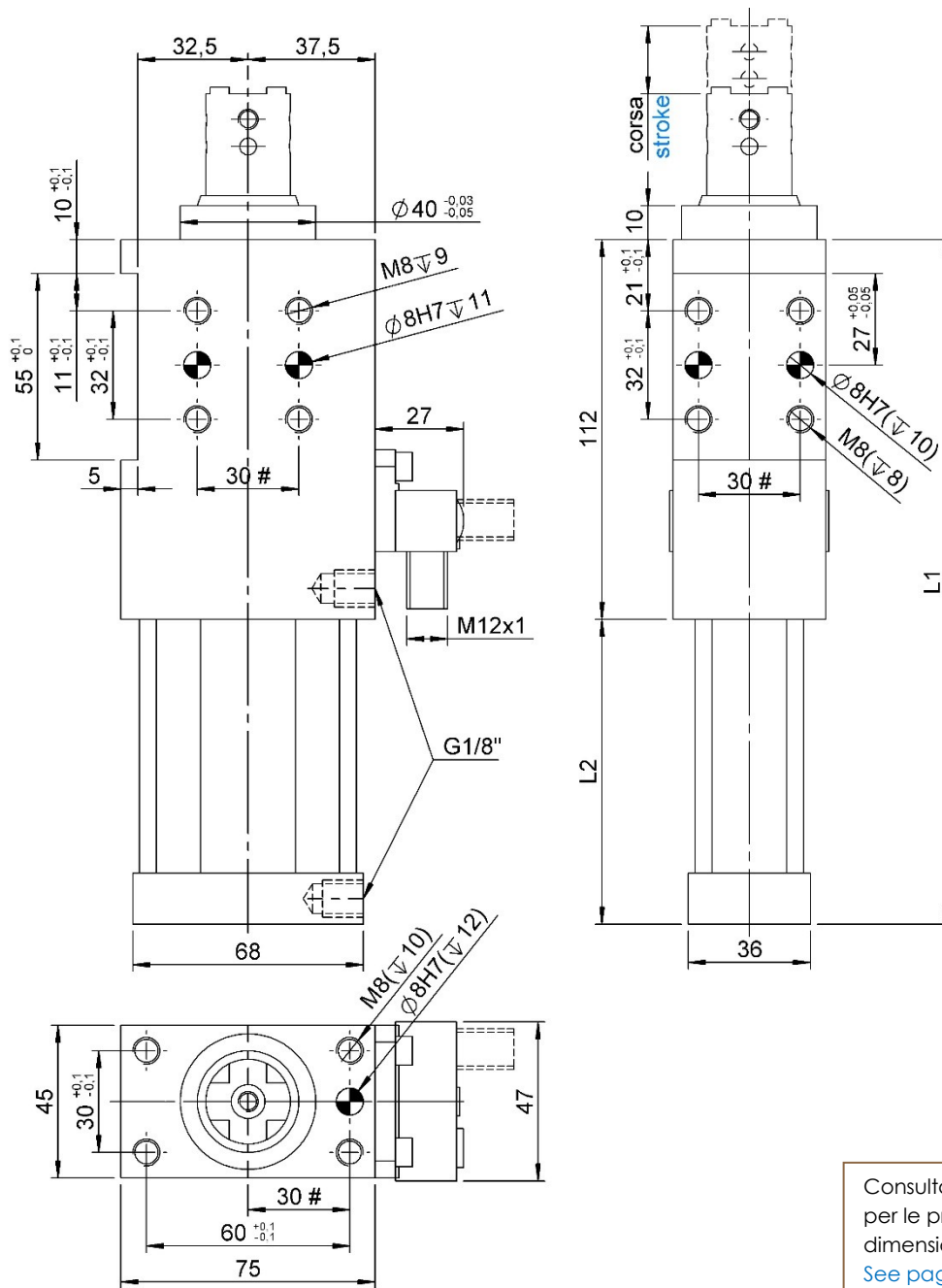
**LA:** leva posteriore  
back lever

**LB:** leva anteriore  
front lever



## DCP40...

Centratore, D. 40, corsa 20/40/60 mm  
Locator device, D. 40, stroke 20/40/60 mm



#Tolleranze: fori spina  $\pm 0,02$ , fori filettati  $\pm 0,1$   
#Tolerances: dowel holes  $\pm 0,02$ , screw holes  $\pm 0,1$

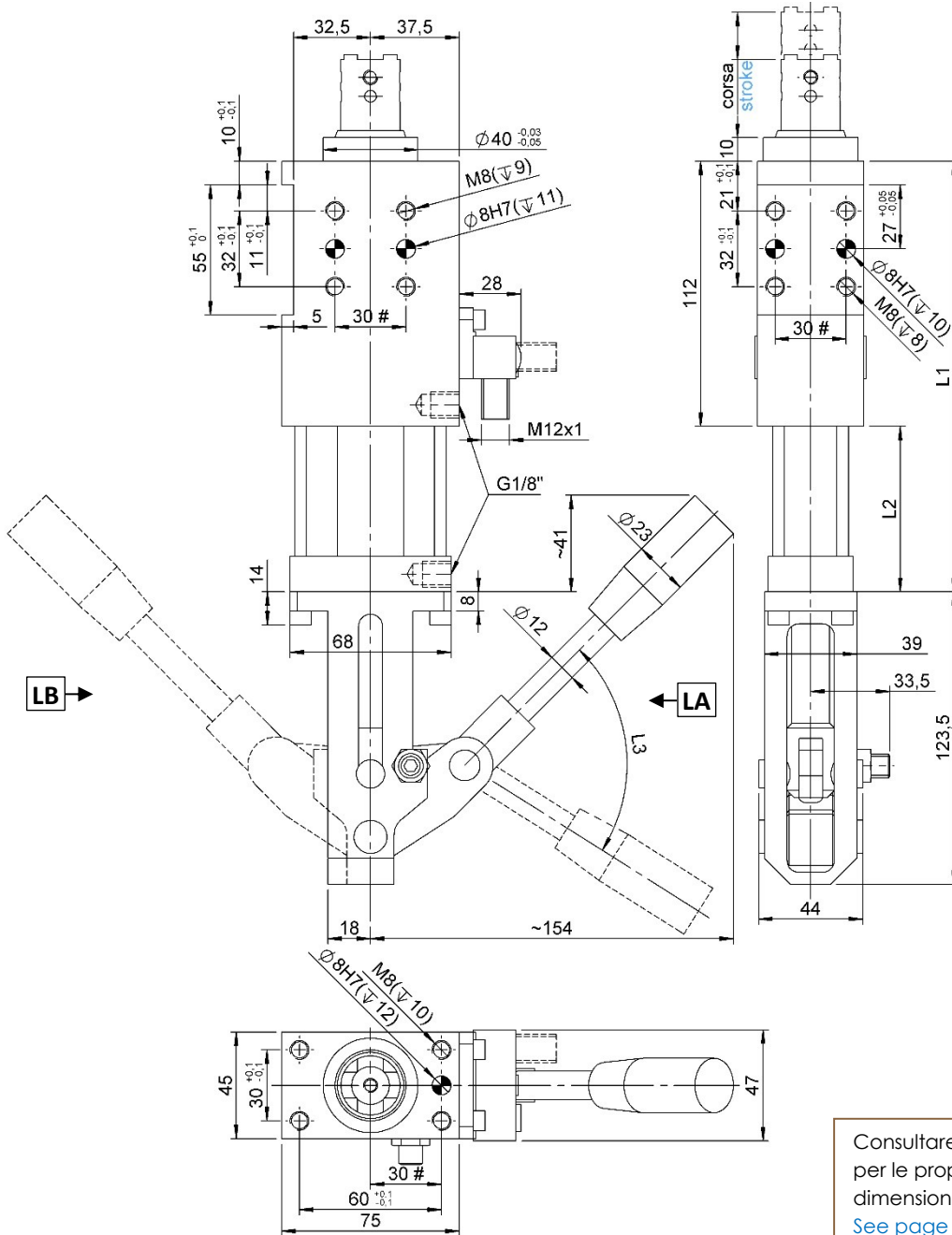
Consultare pag. 6-7  
per le proprietà  
dimensionali degli steli.  
See page 6-7 for the  
dimensional properties  
of the rods.

Modello Type	Alesaggio cilindro Cylinder bore	Corsa stelo Rod stroke	L1	L2	Peso Weight	Consumo d'aria (5 bar) Air consumption (5 bar)	
	[ mm ]	[ mm ]	[ mm ]	[ mm ]	[ Kg ]	[ l ]	
DCP40...-20I	40	20	182	70	~ 1,7	~ 0,3	
DCP40K...-20I					~ 1,8		
DCP40...-40I		40	40	202	90	~ 1,8	~ 0,55
DCP40K...-40I						~ 1,9	
DCP40...-60I		60	60	222	110	~ 1,9	~ 0,8
DCP40K...-60I						~ 2,0	



## DCP40...M...

Centratore, D. 40, comando manuale, corsa 20/40/60 mm  
 Locator device, D. 40, hand lever, stroke 20/40/60 mm



#Tolleranze: fori spina  $\pm 0.02$ , fori filettati  $\pm 0.1$   
 #Tolerances: dowel holes  $\pm 0.02$ , screw holes  $\pm 0.1$

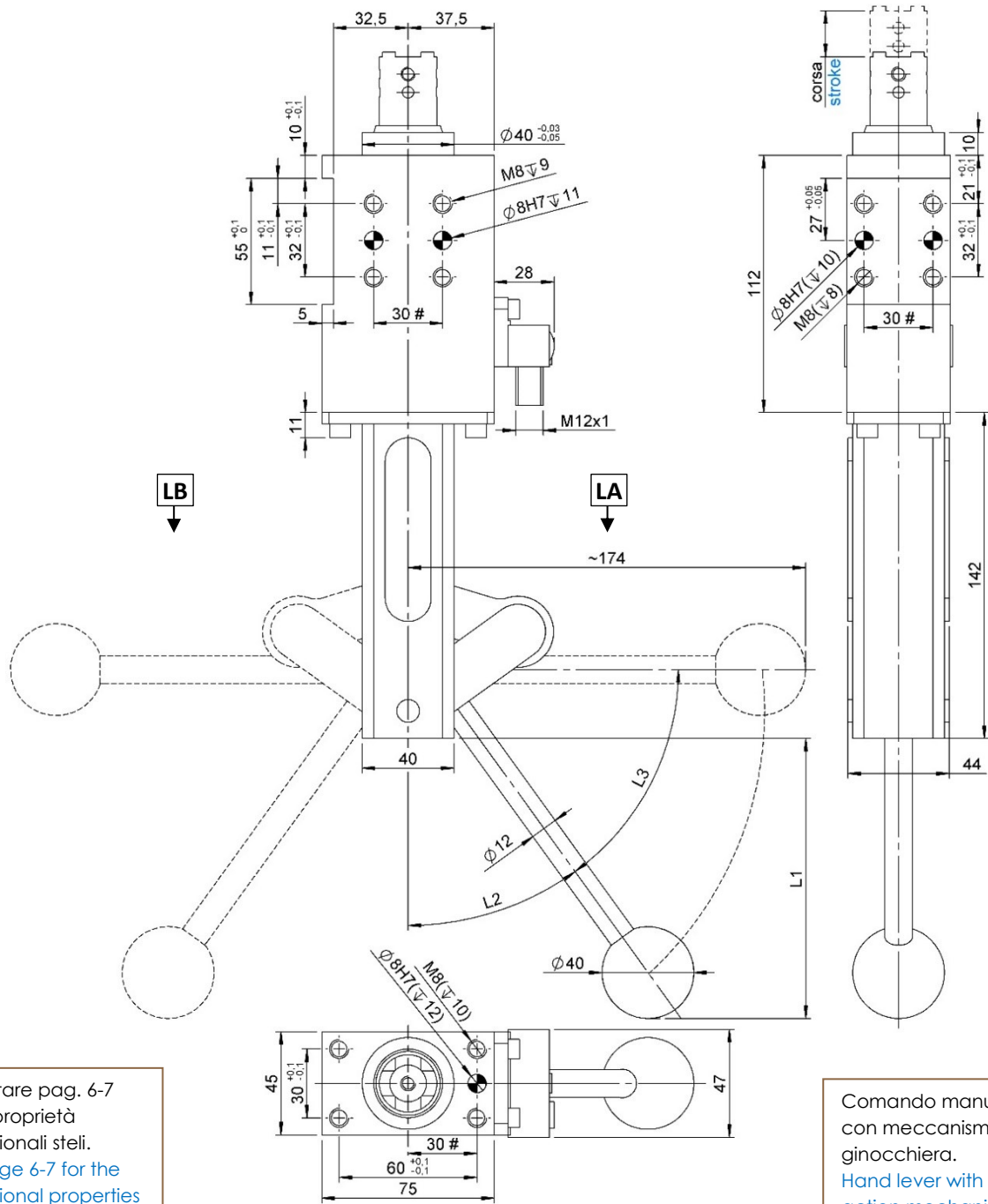
Consultare pag. 6-7  
 per le proprietà  
 dimensionali degli steli.  
 See page 6-7 for the  
 dimensional properties  
 of the rods.

Modello Type	Alesaggio cilindro Cylinder bore	Corsa stelo Rod stroke	L1	L2	L3	Peso Weight	Consumo d'aria (5 bar) Air consumption (5 bar)	
	[ mm ]	[ mm ]	[ mm ]	[ mm ]	[ ° ]	[ Kg ]	[ l ]	
DCP40M...-20I-L...	40	20	182	70	26	~ 2,9	~ 0,25	
DCP40KM...-20I-L...						~ 3,0		
DCP40M...-40I-L...		40	40	202	90	47	~ 3,0	~ 0,5
DCP40KM...-40I-L...							~ 3,1	
DCP40M...-60I-L...		60	60	222	110	78	~ 3,1	~ 0,75
DCP40KM...-60I-L...							~ 3,2	



## DCM40K...

Centratore manuale, corsa 40/60 mm  
Manual locator device, stroke 40/60 mm



Consultare pag. 6-7 per le proprietà dimensionali steli.  
See page 6-7 for the dimensional properties of the rods.

Comando manuale con meccanismo a ginocchiera.  
Hand lever with toggle action mechanism.

#Tolleranze: fori spina ±0.02, fori filettati ±0.1  
#Tolerances: dowel holes ±0.02, screw holes ±0.1

Modello Type	Corsa stelo Rod stroke	L1	L2	L3	Peso Weight
	[ mm ]	[mm]	[°]	[°]	[ Kg ]
DCM40K...-40I-L...	40	104	45	45	~ 2,9
DCM40K...-60I-L...	60	122	35	55	~ 3,1

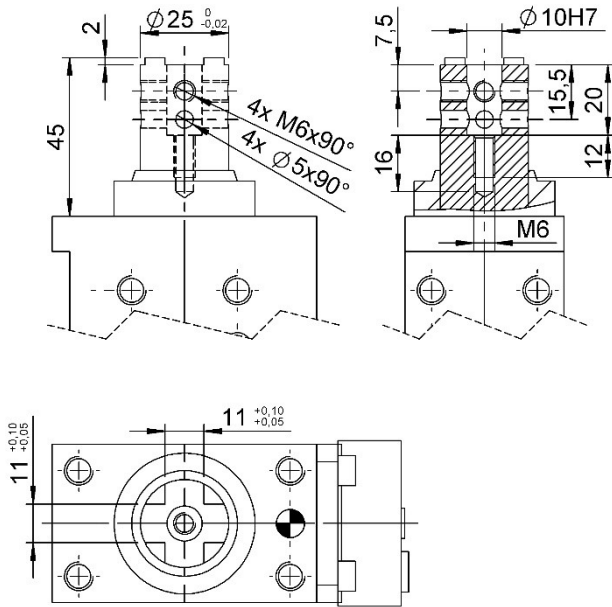


**Tipologie Steli**

**Types of rods**

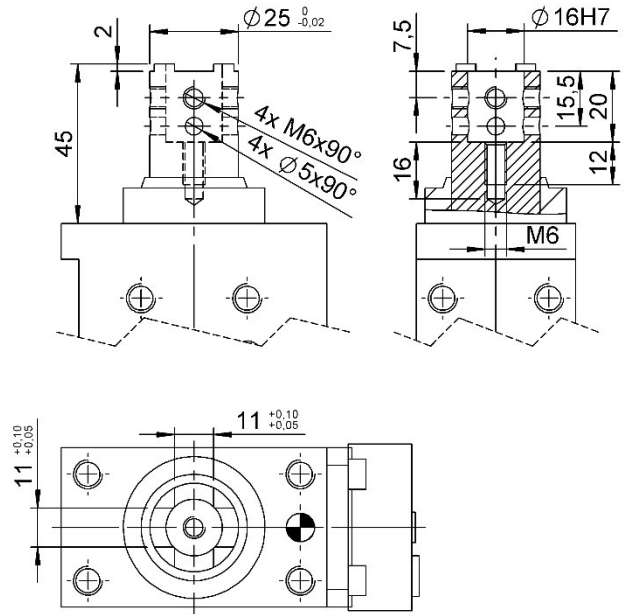
Tipologia **AN**

Type **AN**



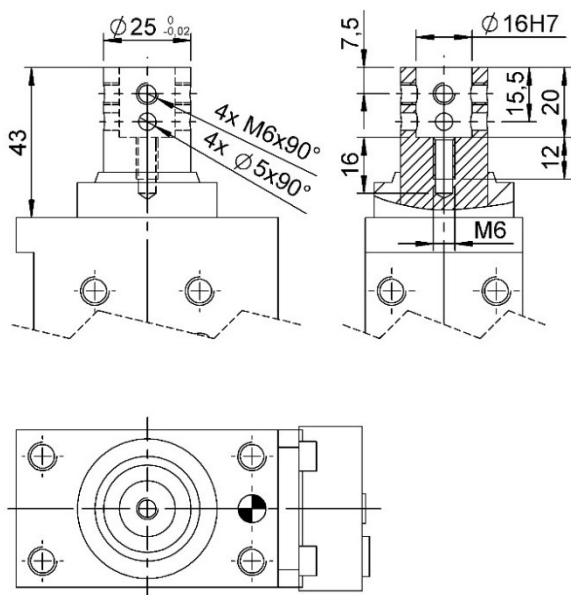
Tipologia **BN**

Type **BN**



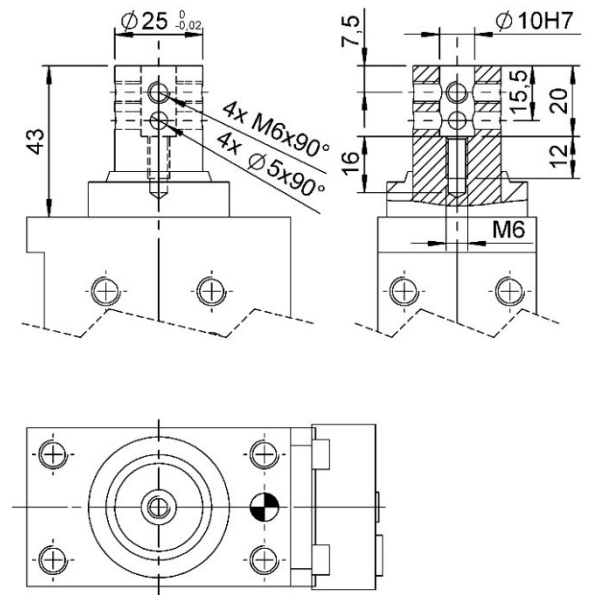
Tipologia **CN**

Type **CN**



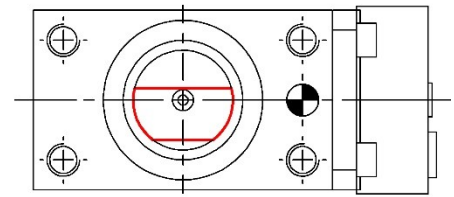
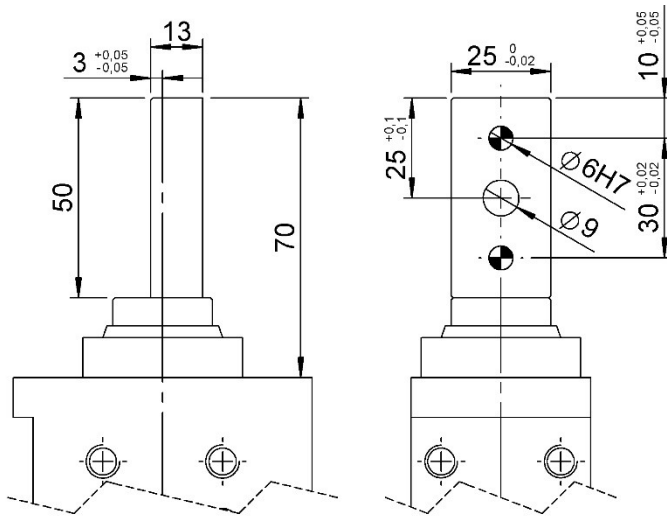
Tipologia **DN**

Type **DN**

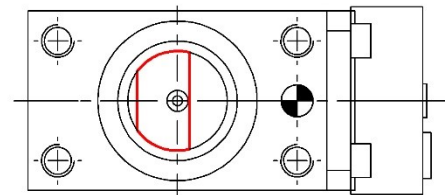




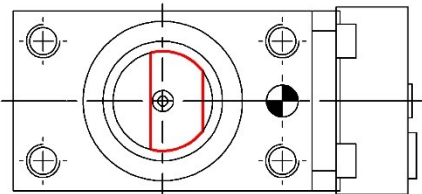
Tipo **SPN**  
Type **SPN**



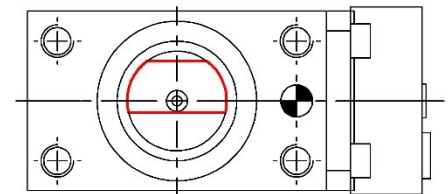
Posizione **06**  
Position **06**



Posizione **09**  
Position **09**



Posizione **03**  
Position **03**



Posizione **12**  
Position **12**

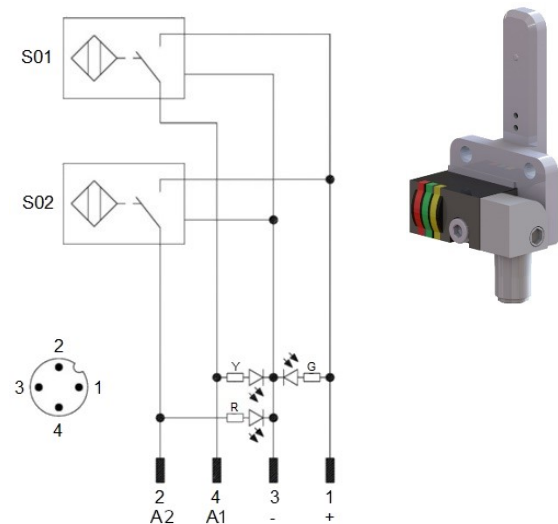
## Schema Finecorsa induttivo (06706/corsa/C) Diagram for Inductive proximity switch (06706/stroke/C)

Caratteristiche tecniche (P+F):

- Tipo di uscita: PNP;
- Tensione d'alimentazione: 10-30 VDC;
- Corrente max. di commutazione: 200 mA;
- Consumo di corrente: < 25 mA;
- Calo di tensione: < 2 V
- Campo di temperatura: -25° / 70° C.

Technical data (P+F):

- Output type: PNP;
- Feeding voltage: 10-30 VDC;
- Max. commutating current: 200 mA;
- Power supply: < 25 mA;
- Voltage drop: < 2 V;
- Temperature range: -25° / 70° C.



S01 = segnale d'apertura  
S01 = opening signal  
S02 = segnale di chiusura  
S02 = closing signal

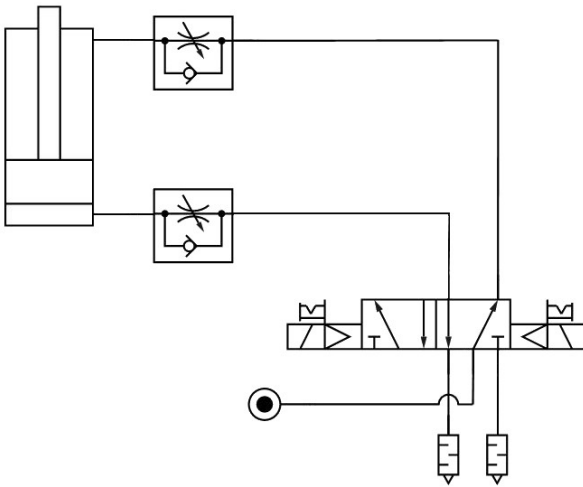
Y = LED giallo / yellow LED  
G = LED verde / green LED  
R = LED rosso / red LED

1 = filo marrone / brown wire  
2 = filo nero / black wire  
3 = filo blu / blue wire  
4 = filo bianco / white wire



## Schema pneumatico

### Pneumatic plant



Modello Type	Consumo d'aria Air consumption (5 bar)	Consumo d'aria Air consumption (6 bar)	Pressione d'esercizio Working pressure
	[ l ]	[ l ]	[ bar ]
DCP40...-20I	~ 0,3	~ 0,35	2 – 8
DCP40K...-20I			
DCP40...-40I	~ 0,55	~ 0,65	
DCP40K...-40I			
DCP40...-60I	~ 0,8	~ 1,0	
DCP40K...-60I			
DCP40M...-20IL...	~ 0,25	~ 0,3	
DCP40KM...-20IL...			
DCP40M...-40IL...	~ 0,5	~ 0,6	
DCP40KM...-40IL...			
DCP40M...-60IL...	~ 0,75	~ 0,9	
DCP40KM...-60IL...			

## Proprietà.

### Properties.

Modello Type	Forza di spinta Pressing force (5 bar)	Forza di trazione Tensile force (5 bar)	Spinta radiale statica max. Static side force max.	Momento torcente max. Max. torque	Angolo di torsione max. Torsion angle max.
	[ N ]	[ N ]	[ N ]	[ Nm ]	[ ° ]
DCP40...	600	500	150	4	± 0,1°
DC...40K...				6	± 0,1°

## Ricambi

### Spare parts

# Kit	Immagine Picture	Descrizione Description	Articolo Article
<b>Finecorsa</b> Proximity switch		Finecorsa induttivo P+F Inductive proximity switch P+F	<b>06706/corsa/C</b> <b>06706/stroke/C</b>
<b>Kit guarnizioni</b> Seals kit		Guarnizioni cilindro pneumatico per DCP40 / DCP40K Pneumatic cylinder seals for DCP40 / DCP40K	<b>SCR-DCP40</b>
		Guarnizioni cilindro pneumatico per DCP40M / DCP40MK Pneumatic cylinder seals for DCP40M / DCP40MK	<b>SCR-DCP40M</b>

